



# SOUTH TEXAS RETINA CONSULTANTS, L.L.P.

CHARLES H. CAMPBELL, M.D., F.A.C.S., F.I.C.S.

Main Office  
5540 Saratoga, Ste. 200  
Corpus Christi, TX  
78413-2953

361-993-8510  
800-779-3482  
Fax 361-993-9184

McAllen Eye Center  
1801 S. 5th Street, Ste. 126  
McAllen, TX  
78503

956-682-2463  
800-300-5338  
Fax 956-682-0122

#### Satellite Offices

Alice  
411 Flournoy Rd.  
(Encino Bldg.), Ste. 204  
Alice, TX 78332

Aransas Pass  
423 West Cleveland  
Aransas Pass, TX 78336

Beeville  
1811 Northwest Frontage Rd.  
Hwy. 181  
Beeville, TX 78102

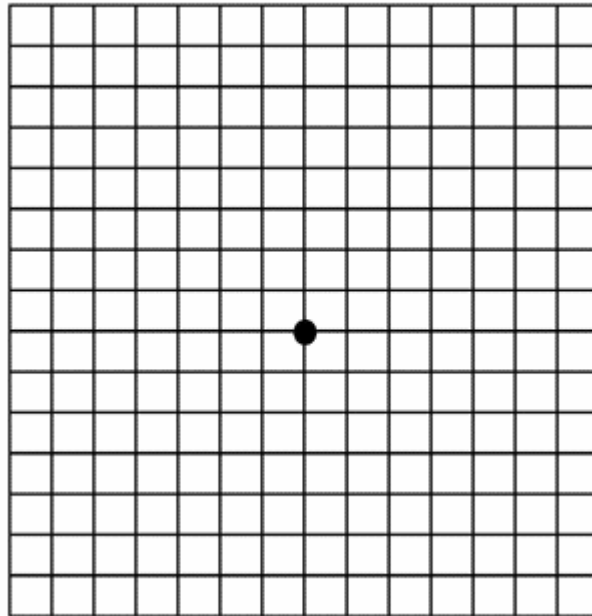
Brownsville  
9 North Park Plaza  
Brownsville, TX 78520

Eagle Pass  
708 S. Bibb  
Eagle Pass, TX 78852

Kingsville  
1126 South 14th St., #A  
Kingsville, TX 78363

## Amsler Grid Vision Test

---



1. Stand approximately three feet from grid.
2. Test right eye first, by covering left eye. Then repeat procedure on the left eye (by covering the right eye).
3. Concentrate on the center dot.
4. If you notice any waves, distortions, or blind spots in the lines, inform your eyecare specialist immediately.

**You may have Macular Degeneration, Diabetic Eye Disease, or some other sight threatening eye disease.**

**If you have questions please call:**

**1-800-779-3482**